

Using Pangaea



How to extract data from Pangaea and convert it into formats that are useful for further applications

Pangaea - more...



You are not logged in ([LOG IN](#))

PANGAEA®

Publishing Network for Geoscientific & Environmental Data



[All](#) [Water](#) [Sediment](#) [Ice](#) [Atmosphere](#)

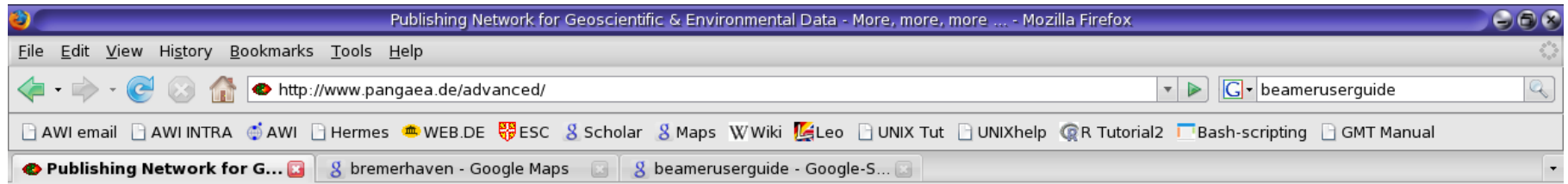
[Help](#) [Advanced Search](#) [Preferences](#) [more...](#)

[About](#) - [Projects](#) - [Software](#) - [WDC-MARE](#) - [Contact](#)

This work is licensed under a [Creative Commons License](#)



Advanced retrieval tool



PANGAEA®
Publishing Network for Geoscientific & Environmental Data

You are not logged in ([LOG IN](#))

Always quote citation when using data!

More, more, more ...

Advanced Search Tools

The following advanced search tools are written in [JAVA](#). To run them you need the [Sun Java Plugin](#) installed in your browser. We recommend Java Version 5.0 (sometimes referred to as version 1.5) or higher. If you use an older version, we cannot guarantee correct function! For full operation it is required to accept the request for extended privileges (it will automatically pop up in your browser when starting the tools).



[PanCore](#) is a tool to access campaign specific information, in particular station lists and sampling events (e.g. CTDs or sediment coring).



[Advanced Retrieval Tool \(ART\)](#) is a web tool which allows to access all levels of data and metadata within PANGAEA. The data level requires administrator/curator rights (please login with your PANGAEA credits on the top right of this page), all other levels are open.

Browser Plugins

If you are using *Internet Explorer 7*, *Netscape 6*, *Mozilla* or *Mozilla Firefox* as browser, you can [install our search plugin](#). This expands your search toolbar by adding **PANGAEA** to the search engine dropdown along with Google and other engines.

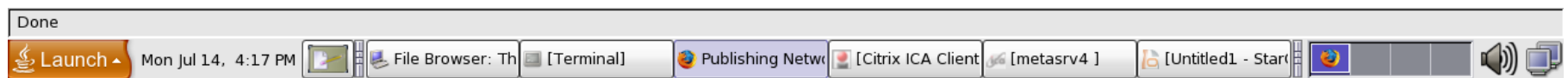


If you are using the *Google Toolbar*, you can [install our search / RSS feed plugin](#). This expands Google Toolbar by adding **PANGAEA** to the search engine dropdown and shows the latest datasets as a RSS feed.

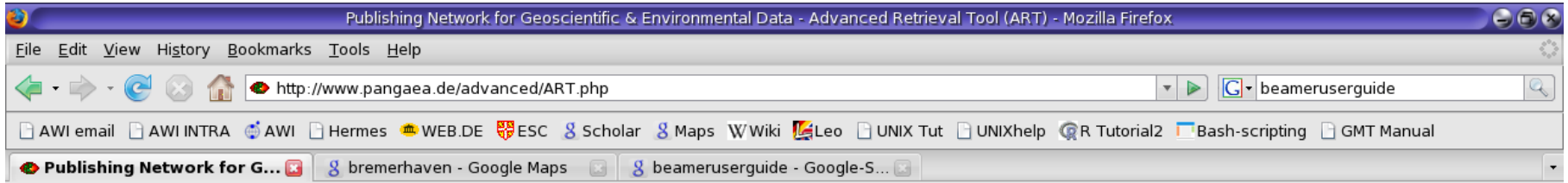
[Mozilla Handle/DOI Protocol Handler](#). The Handle/DOI Protocol Handler allows Firefox to resolve "real" Digital Object Identifier (doi:) URIs like [doi:10.1594/PANGAEA.548746](#).

[Handle URI Resolver for the Microsoft Internet Explorer®](#). The Handle URI Resolver is a plug-in that enables Microsoft Internet Explorer® Windows version (Internet Explorer 3 thru Internet Explorer 7) to recognize the Handle/DOI protocol and allows Microsoft Internet Explorer® to resolve "real" Digital Object Identifier (doi:) URIs like [doi:10.1594/PANGAEA.548746](#).

[Contact](#)



ART - overview

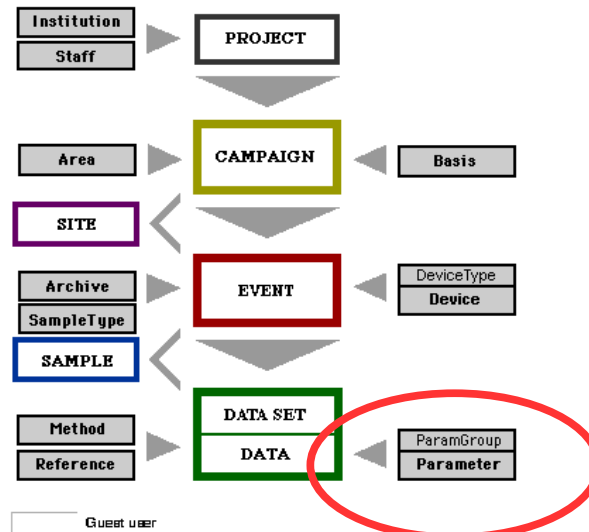


PANGAEA[®]
Publishing Network for Geoscientific & Environmental Data

You are not logged in ([LOG IN](#))

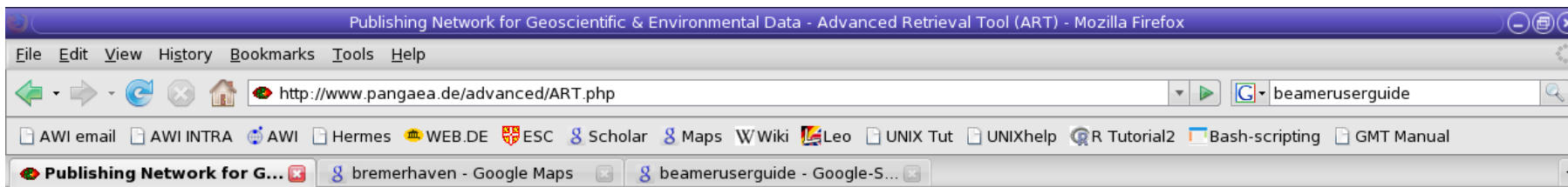
Always quote citation when using data!

Advanced Retrieval Tool (ART)



[Contact](#)

Parameter search



PANGAEA®
Publishing Network for Geoscientific & Environmental Data

You are not logged in (LOG IN)

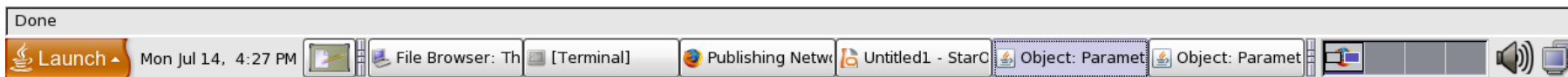
Always quote citation when using data!

Advanced Retrieval Tool (ART)

Parameter	Unit	ID parameter
Cibicides wuellerstorfi, d13C	per mil PDB	77506
Cibicoides cf. wuellerstorfi, d13C	per mil PDB	1506
Cibicoides wuellerstorfi, d13C	per mil PDB	117
Fontbotia wuellerstorfi, d13C	per mil PDB	14877
Planulina wuellerstorfi, d13C	per mil PDB	1559

ID Parameter

Contact



Dataset search

Publishing Network for Geoscientific & Environmental Data - Search - Mozilla Firefox

http://www.pangaea.de/search?count=10&minlat=&minlon=&maxlat=&maxlon=&mindate=&maxdate=&env=

beameruserguide

AWI email AWI INTRA AWI Hermes WEB.DE ESC Scholar Maps Wiki Leo UNIX Tut UNIXhelp R Tutorial2 Bash-scripting GMT Manual

Publishing Network for G... bremerhaven - Google Maps

All Water Sediment Ice Atmosphere

param117 geocode2205 Search

Help Advanced Search Preferences more...

You are not logged in (LOG IN)

Always quote citation when using data!

123 datasets found on search for »param117...« Show Map

<< PREV | 1 | 2 | 3 | 4 | 5 | 6 | 7 | 8 | 9 | 10 | NEXT >>

- Zahn, R; Winn, K; Sarnthein, M (1986):** Stable carbon and oxygen isotope ratios of benthic foraminifera from the East Atlantic Ocean
Supplement to: **Zahn, R; Winn, K; Sarnthein, M (1986):** Benthic foraminiferal d13C and accumulation rates of organic carbon: *Uvigerina peregrina* group and *Cibicidoides wuellerstorfi*, *Paleoceanography*
Size: 2 datasets
doi:10.1594/PANGAEA.692123 - Score: 100% - Similar datasets
- Oppo, DW; McManus, JF; Cullen, JL (1998):** Stable carbon and oxygen isotope ratios of *Cibicidoides wuellerstorfi* in the 500 to 340 kyr section of ODP Site 162-980 in the subpolar North Atlantic
Supplement to: **Oppo, DW; McManus, JF; Cullen, JL (1998):** Abrupt climate events 500,000 to 340,000 years ago: evidence from subpolar North Atlantic sediments, *Science*
Size: 822 data points

Done

Launch

Mon Jul 14, 4:41 PM



File Browser: This Comput

[Terminal]

Publishing Network for Ge

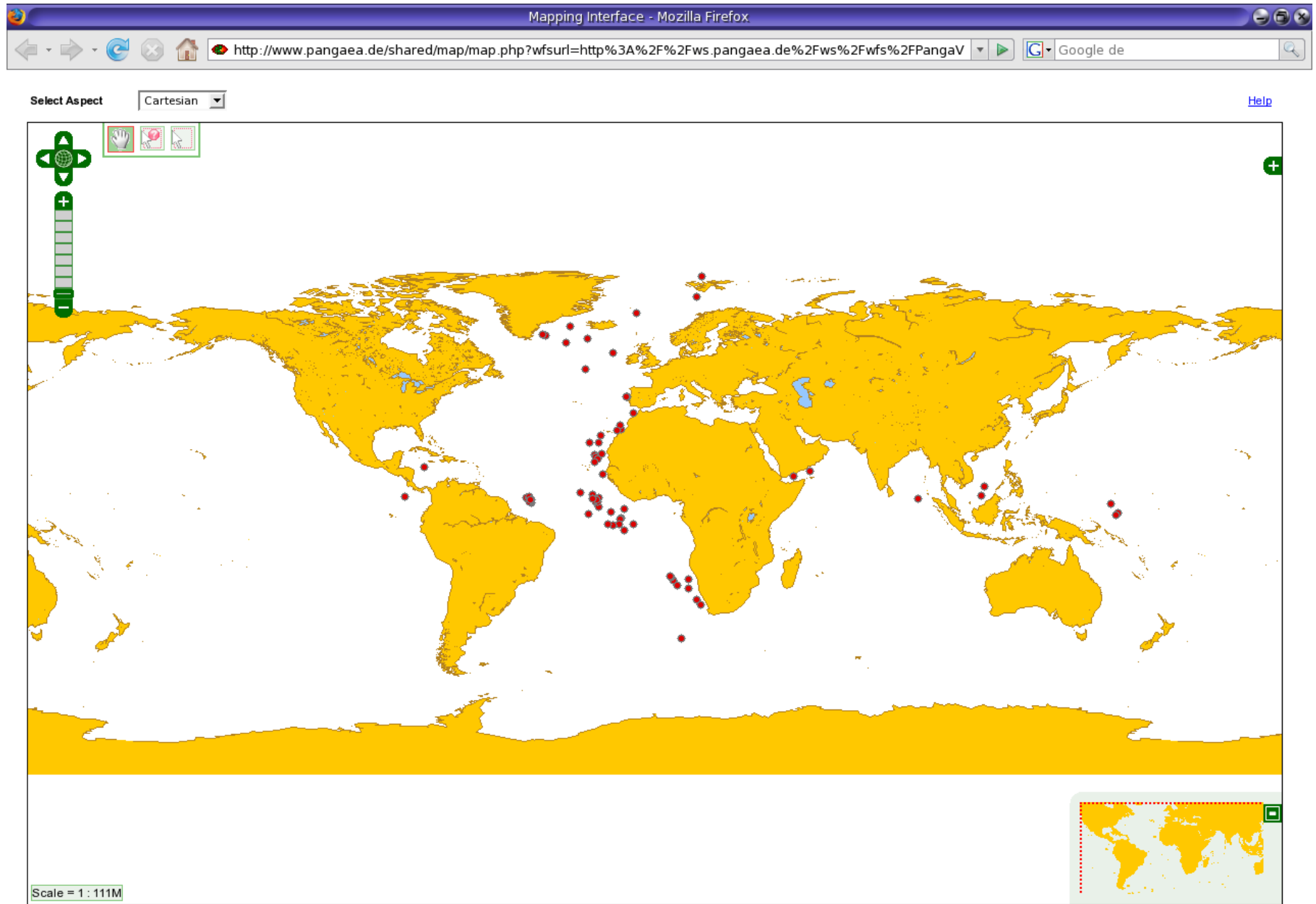
Untitled1 - StarOffice Impr



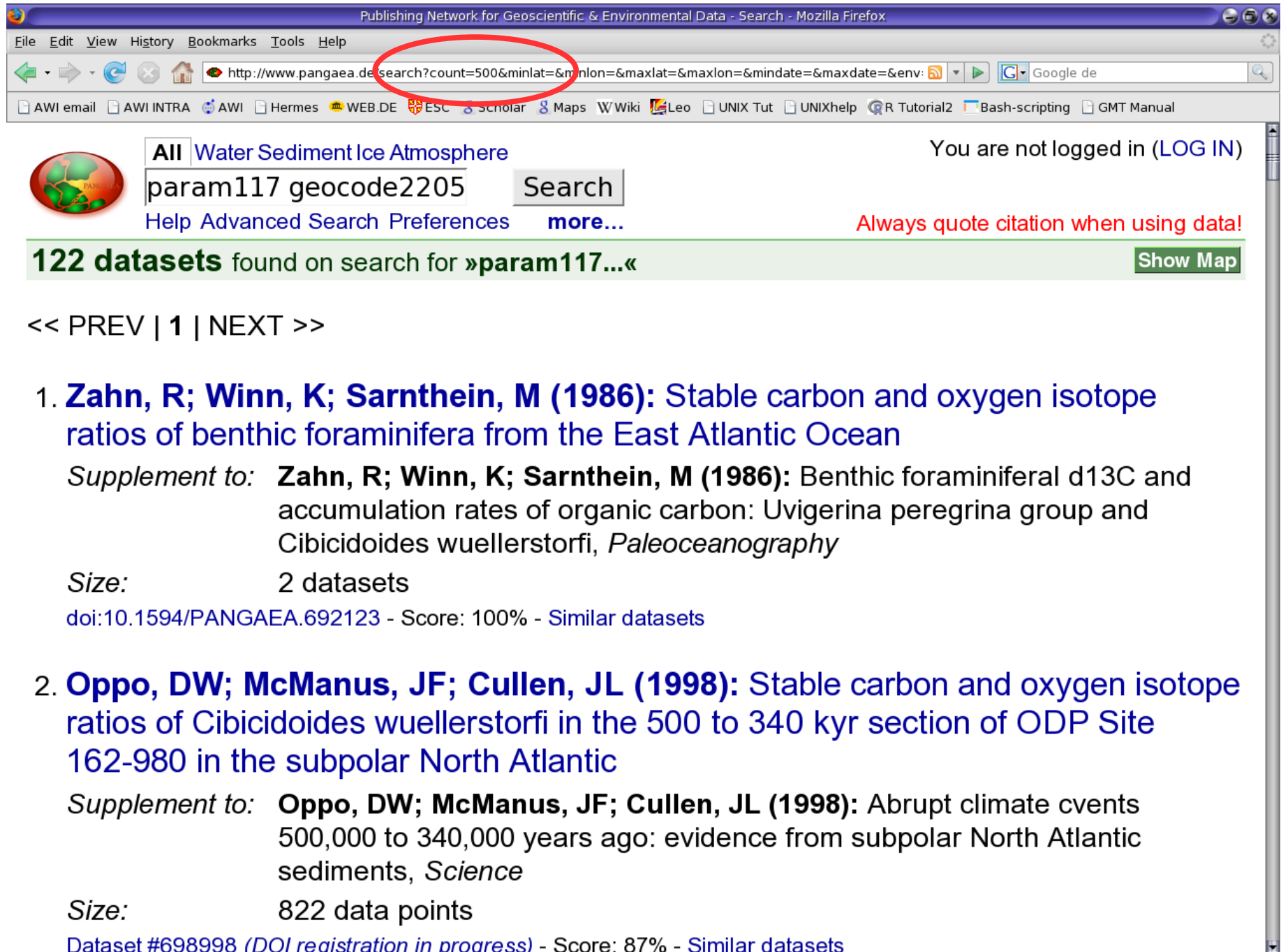
System tray icons



Quick distribution map



Change count=10 to count=500



Publishing Network for Geoscientific & Environmental Data - Search - Mozilla Firefox

File Edit View History Bookmarks Tools Help

http://www.pangaea.de/search?count=500&minlat=&minlon=&maxlat=&maxlon=&mindate=&maxdate=&env: Google de

AWI email AWI INTRA AWI Hermes WEB.DE ESC Scholar Maps W/Wiki Leo UNIX Tut UNIXhelp R Tutorial2 Bash-scripting GMT Manual

All Water Sediment Ice Atmosphere You are not logged in (LOG IN)

param117 geocode2205 Search

Help Advanced Search Preferences more...

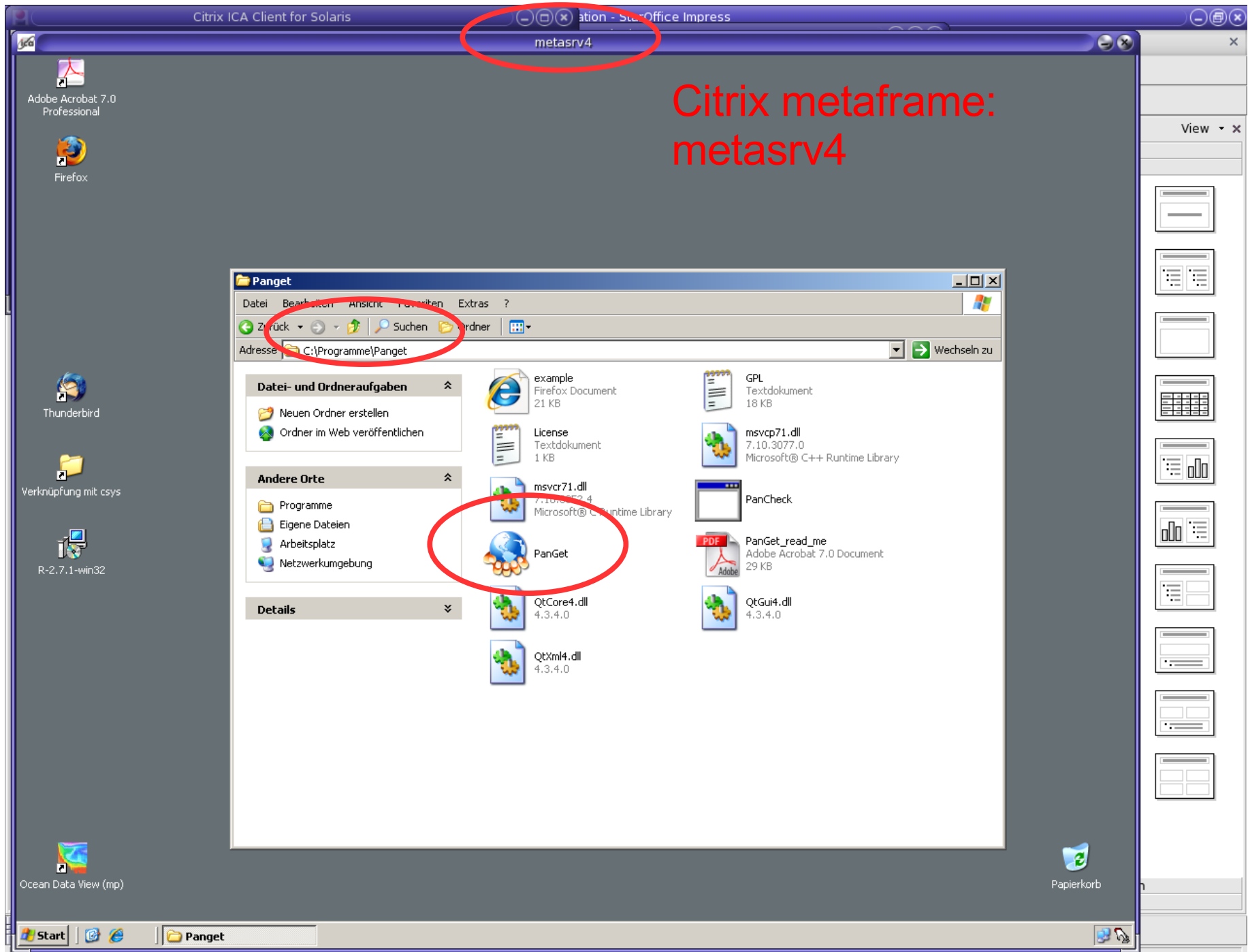
Always quote citation when using data!

122 datasets found on search for »param117...« Show Map

<< PREV | 1 | NEXT >>

- Zahn, R; Winn, K; Sarnthein, M (1986):** Stable carbon and oxygen isotope ratios of benthic foraminifera from the East Atlantic Ocean
Supplement to: **Zahn, R; Winn, K; Sarnthein, M (1986):** Benthic foraminiferal d13C and accumulation rates of organic carbon: *Uvigerina peregrina* group and *Cibicidoides wuellerstorfi*, *Paleoceanography*
Size: 2 datasets
doi:10.1594/PANGAEA.692123 - Score: 100% - Similar datasets
- Oppo, DW; McManus, JF; Cullen, JL (1998):** Stable carbon and oxygen isotope ratios of *Cibicidoides wuellerstorfi* in the 500 to 340 kyr section of ODP Site 162-980 in the subpolar North Atlantic
Supplement to: **Oppo, DW; McManus, JF; Cullen, JL (1998):** Abrupt climate events 500,000 to 340,000 years ago: evidence from subpolar North Atlantic sediments, *Science*
Size: 822 data points
Dataset #698998 (DOI registration in progress) - Score: 87% - Similar datasets

Enter Windows (metasrv4 only), then C:\Programme\Panget



PanGet: Specify ID list and download directory

ID list

Download directory

Build

PanGet - V1.6a

Identity

Your name: these

ID list

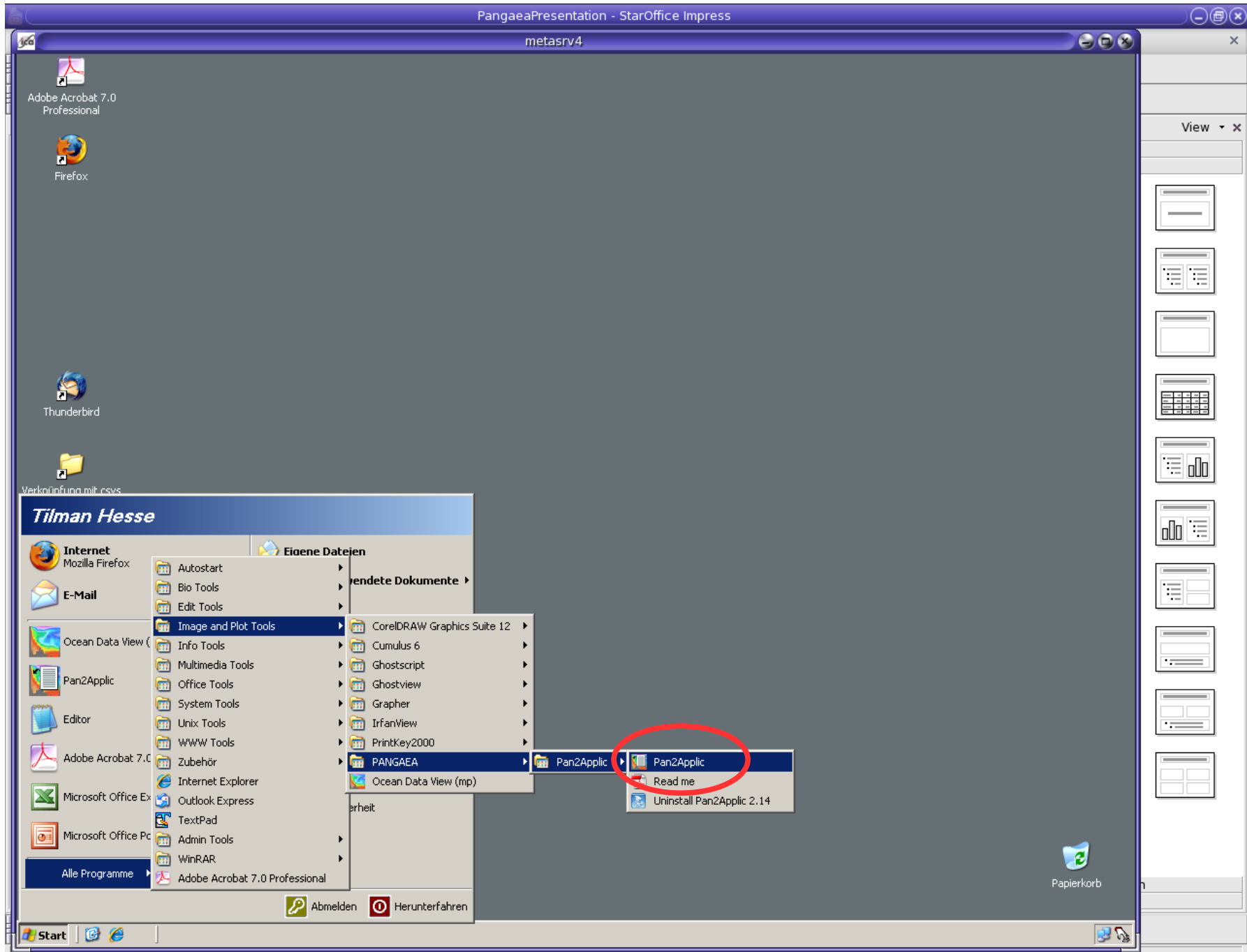
File: S:\pangaea_odv\Datasets\Cibicidoides_wuellerstorfi\search.htm

Download directory

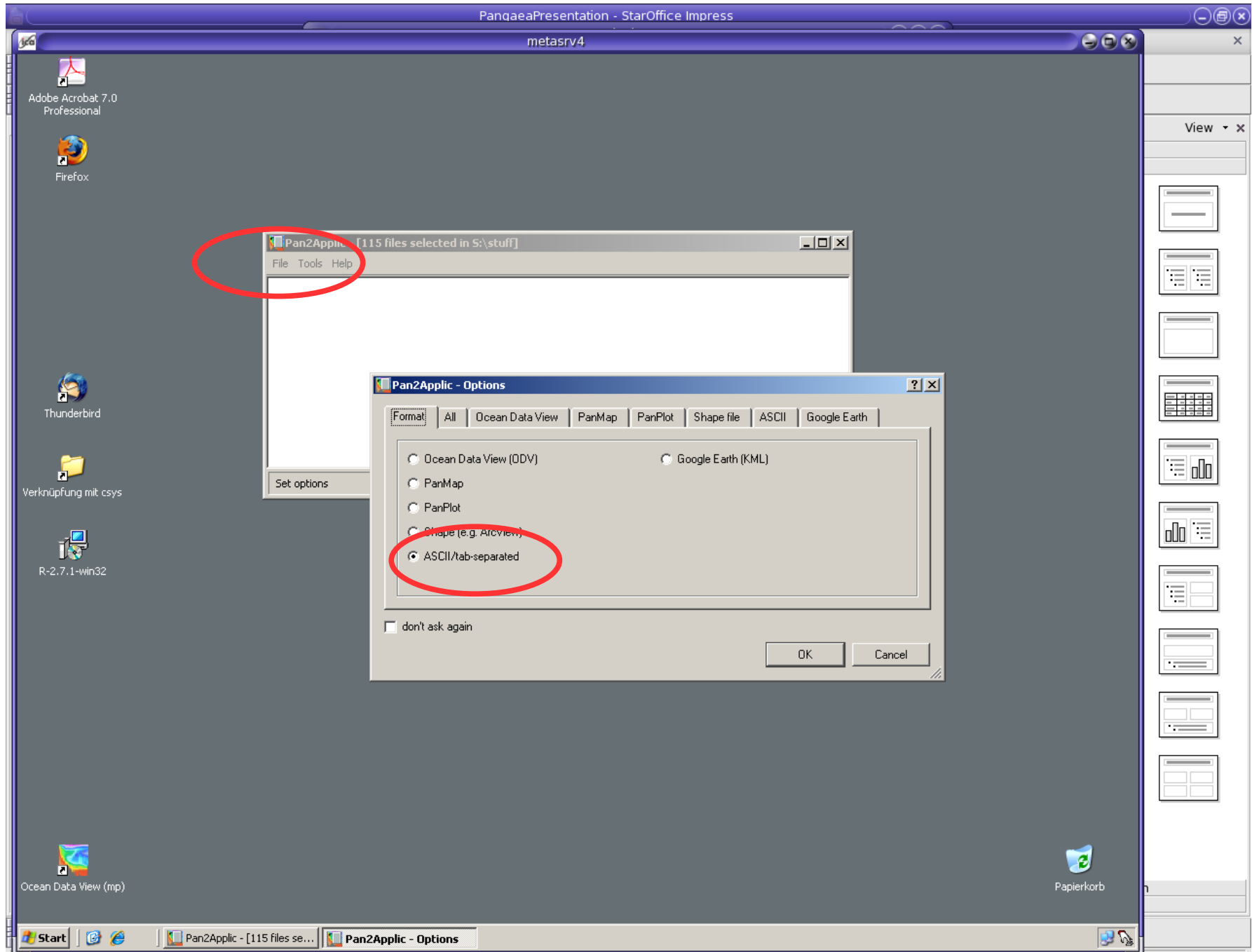
Directory: S:\pangaea_odv\Datasets

Build

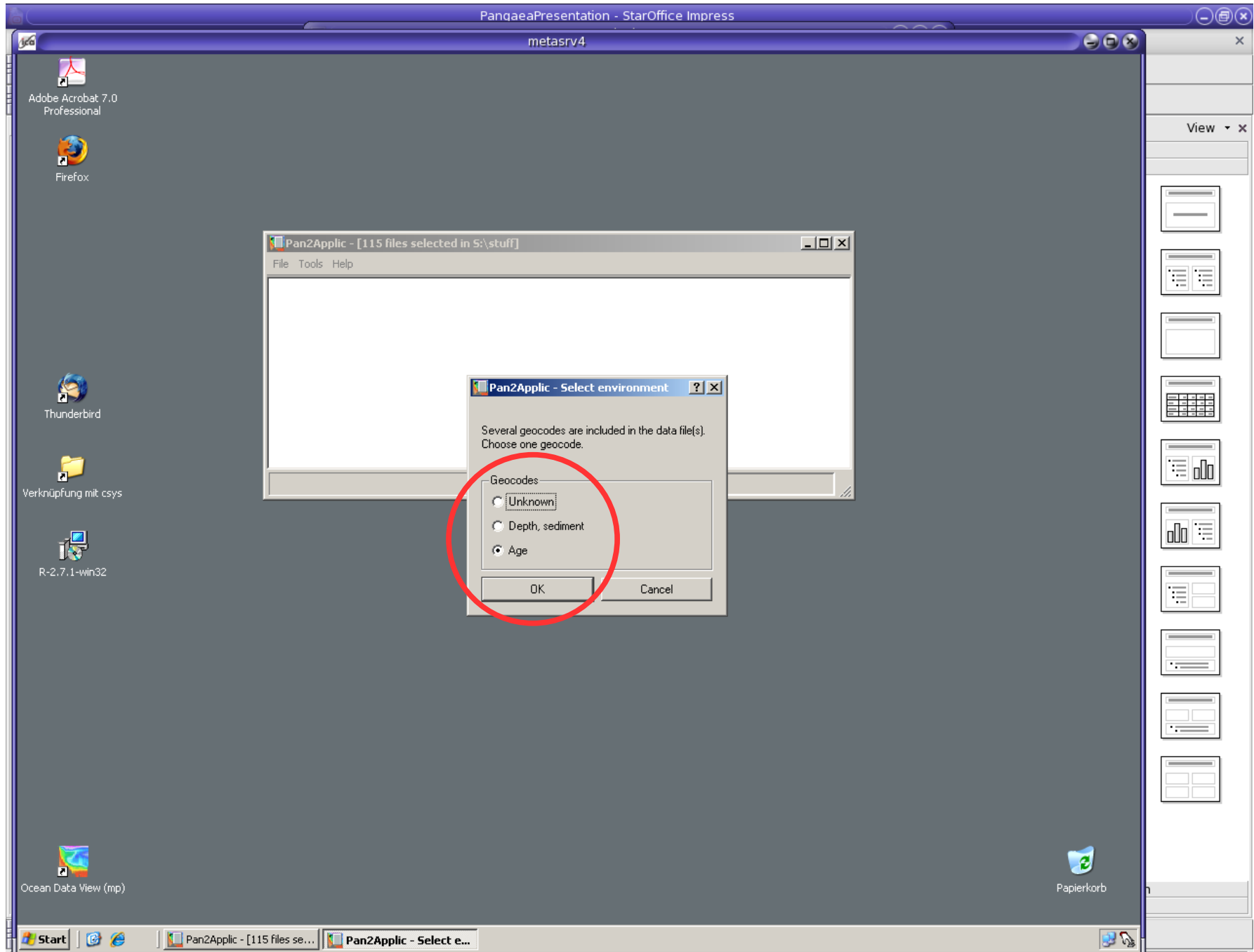
Start Pan2Applic



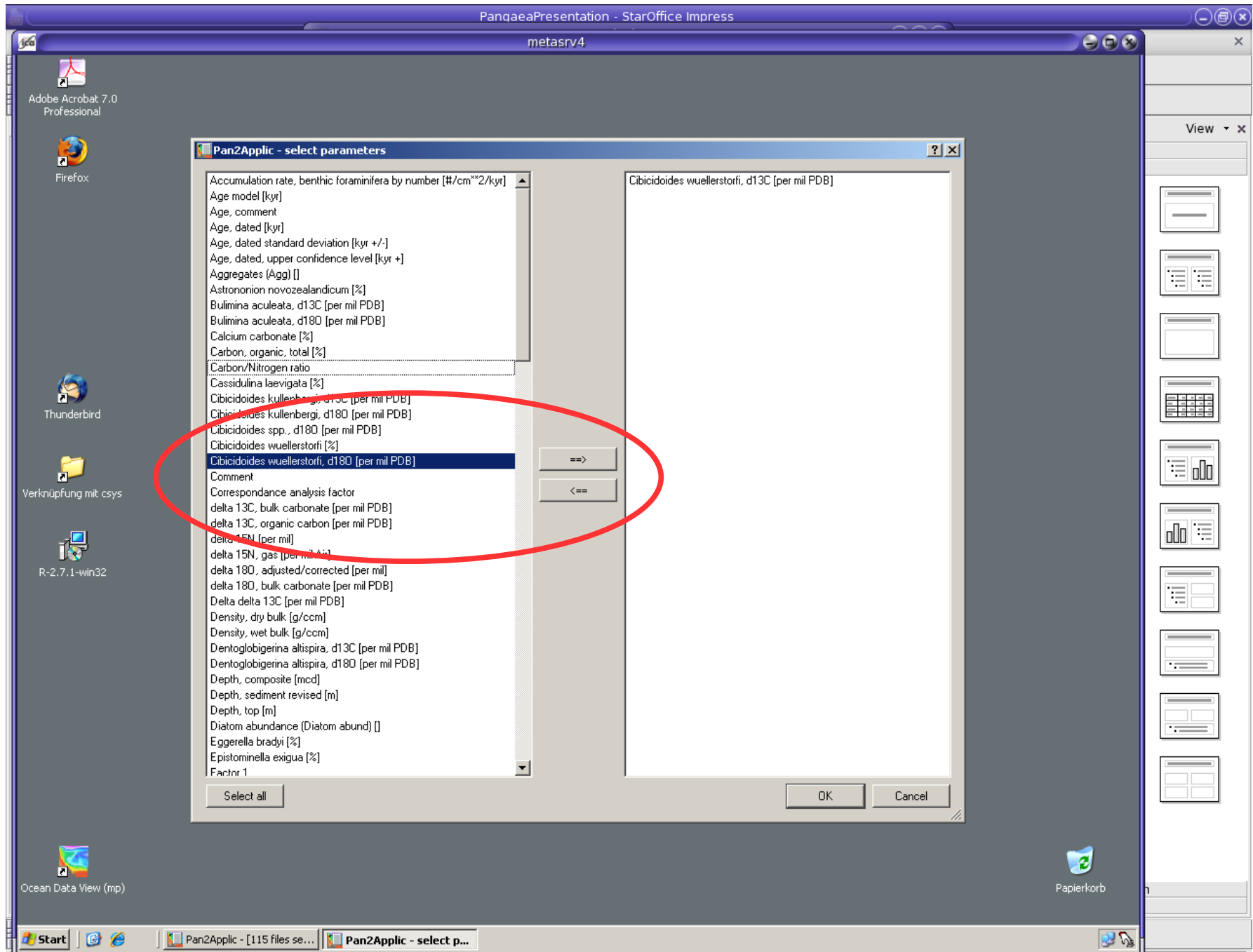
Pan2Applic: File > Folder...; choose format required



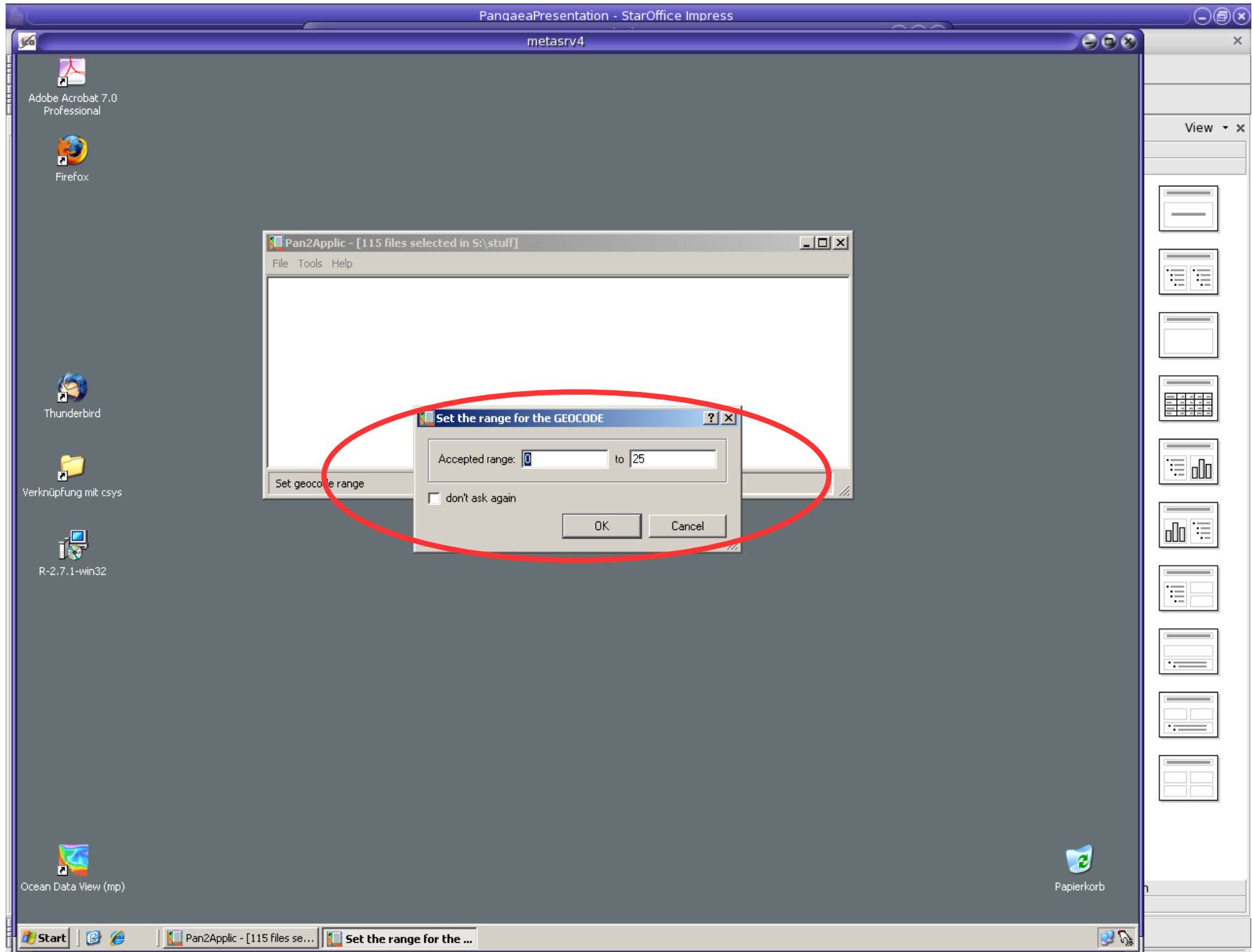
Pan2Applic: Select geocode



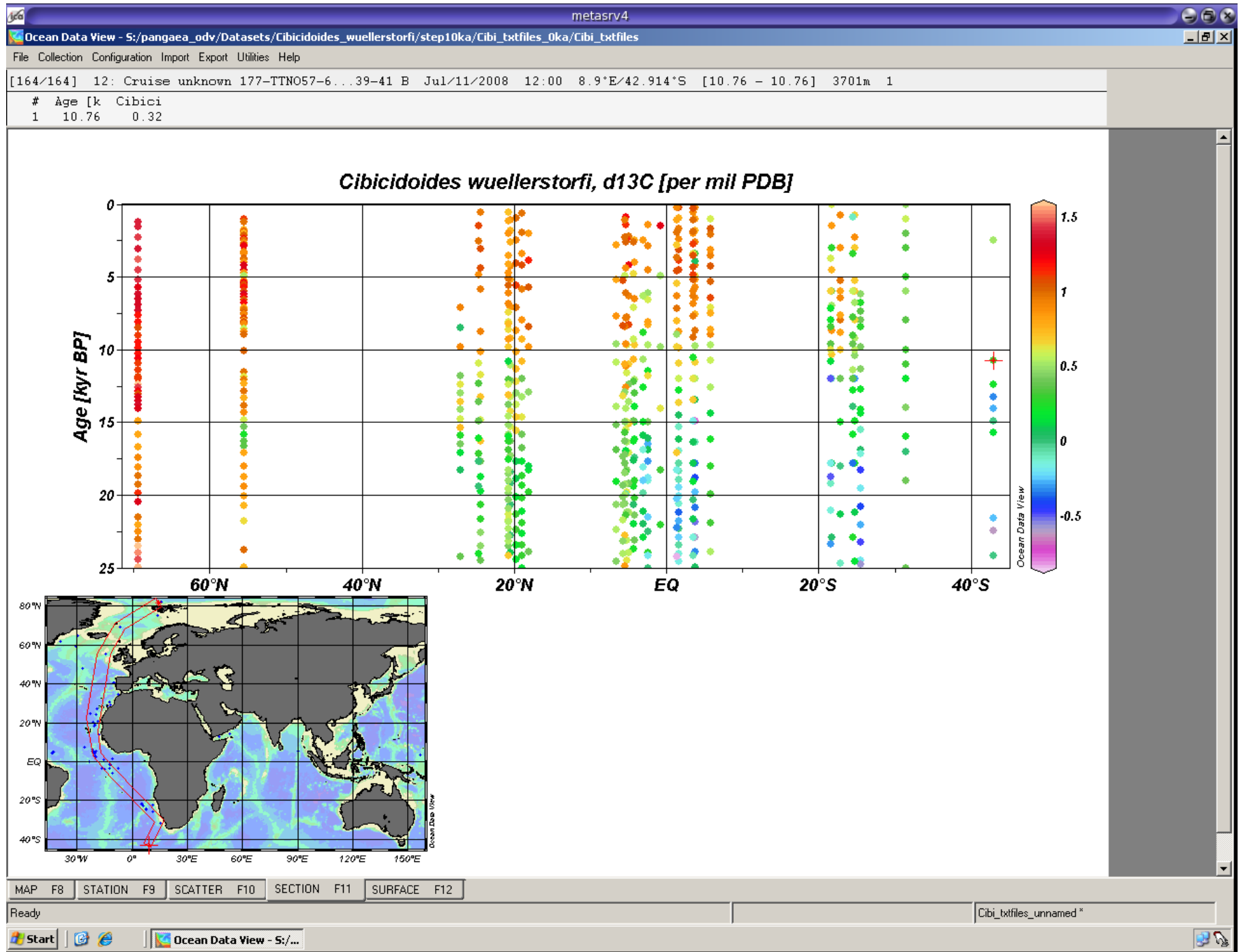
Pan2Applic: Select parameter(s)



Pan2Applic: Set geocode range



Application example: Ocean Data View (ODV)



Summary

- Get parameter ID via ART (Adv. Retrieval Tool)
- Search for datasets in Pangaea, then save as HTML only
- Use PanGet to download datasets (Windows only)
- Use Pan2Applic to convert the textfiles into the required format (e.g. ODV, ASCII, etc)
- Problem: PanGet only available for Windows, other software runs under linux and can be downloaded from pangaea.de/software